

TWO SECTIONS

ORDERING CODE

400 C2 1 0 00 00

AVAILABLE OPTIONS:
00 = TRISTABLE LEVER
0M = MONOSTABLE LEVER
0N = BISTABLE LEVER

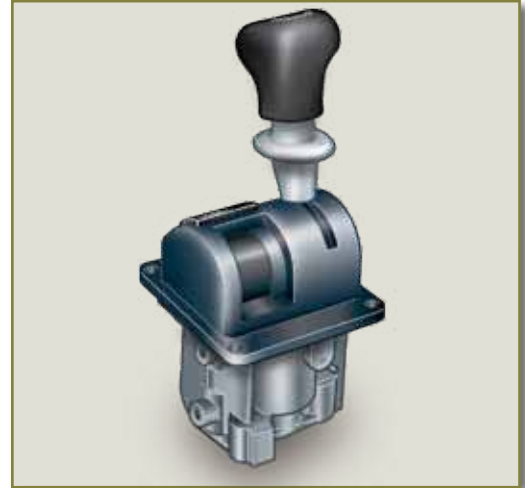
00 = HOLES Ø 1/8" G
10 = QUICK COUPLING Ø 6x4
20 = QUICK COUPLING Ø 1/4" G

WITHOUT LIGHT

1 STAGE

CP2000 SERIES

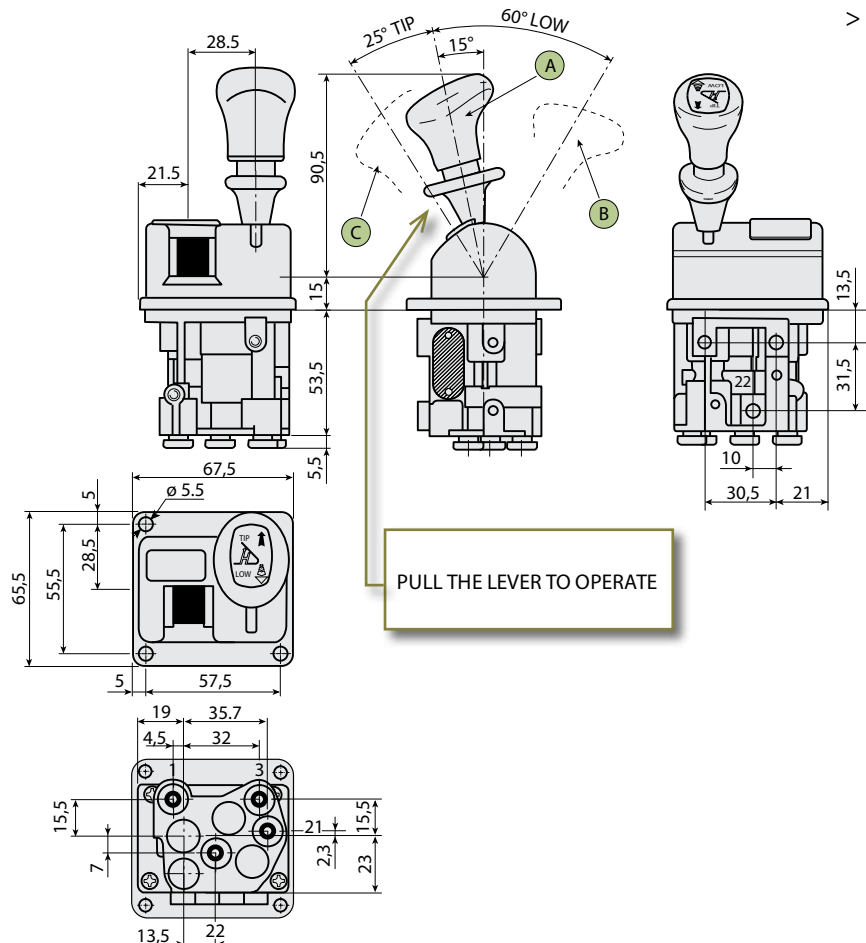
PNEUMATIC CONTROL



TECHNICAL SPECIFICATIONS

Working medium	air	Operative temperature	- 40° + 80°C
Working pressure	max 12 bar	Nominal diameter	Ø 4 mm

> Pneumatic distributor with proportional lowering control.

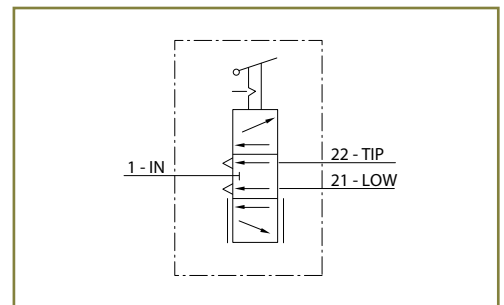


LEVER POSITION

- A Rest position (with lock)
- B Operation PORT 21
- C Operation PORT 22

AIR PORTS

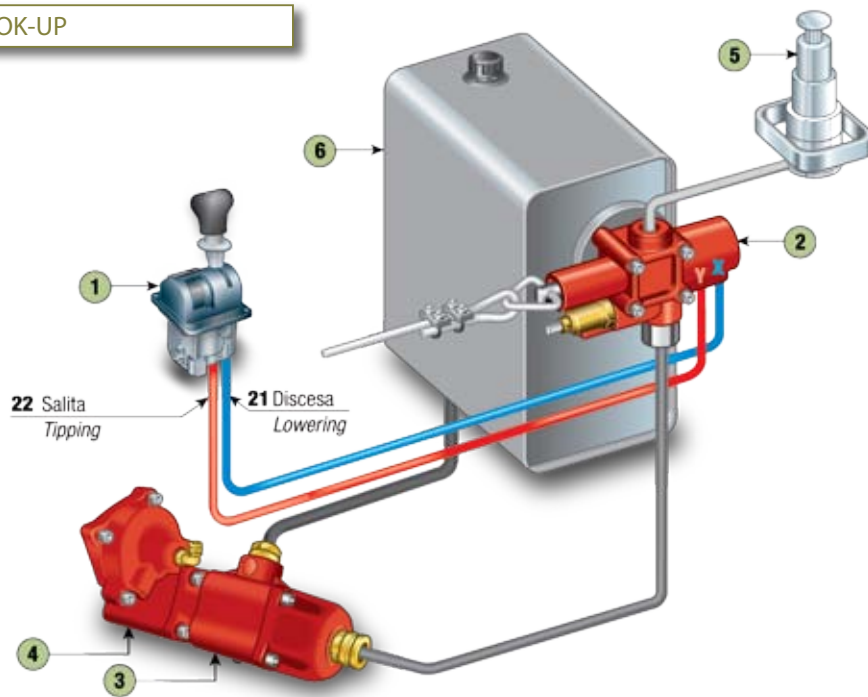
- 1 Compressed air supply (IN) Ø 6x4 e Ø 1/4"-1/8"G
- 21 Control lowering (LOW) Ø 6x4 e Ø 1/4 -1/8"G
- 22 Control tipping (TIP) Ø 6x4 e Ø 1/4"-1/8"G
- 3 Free exhaust (EX) Ø 6x4 e Ø 1/4"-1/8"G



mod.CP2000 1

EXAMPLE OF HOOK-UP



- 1 PNEUMATIC CONTROL
- 2 DISTRIBUTOR
- 3 PUMP
- 4 POWER TAKE OFF
- 5 CYLINDER
- 6 OIL TANK

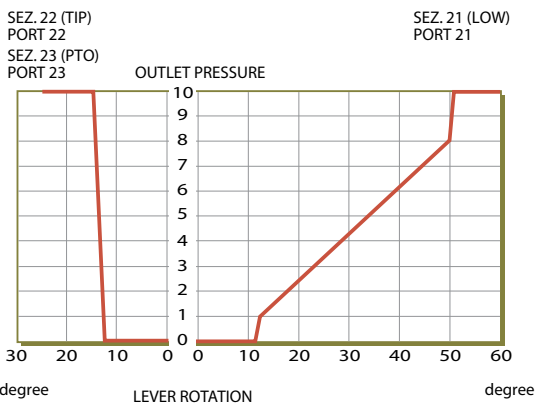


OPTIONS

DISTRIBUTOR CODE		DESCRIPTION
400C2101000	Proportional lowering	00 Tristable lever (three stable positions: rest, low, tip).
400C210100M	Proportional lowering	0M Monostable lever (when not manually operated, the lever returns to neutral position).
400C210100N	Proportional lowering	0N Bistable lever (the lever returns to release only from tip position).

CP2000-1 SPARE PARTS KIT

CODE	DESCRIPTION	CODE	DESCRIPTION
4R17M300000	Lever kit CP2000 	4R17M600000	Lever with cam 



DIAGRAM

DIAGRAM REFERRED TO SUPPLY PRESSURE = 10 bar

PNEUMATIC CONTROLS



TRANSPORT HYDRAULIC SOLUTIONS

TM

INNOVATION IN MOTION



FREEPHONE

New Zealand **0800 22 55 69**

Australia **1800 22 55 69**

www.transporthydraulics.com