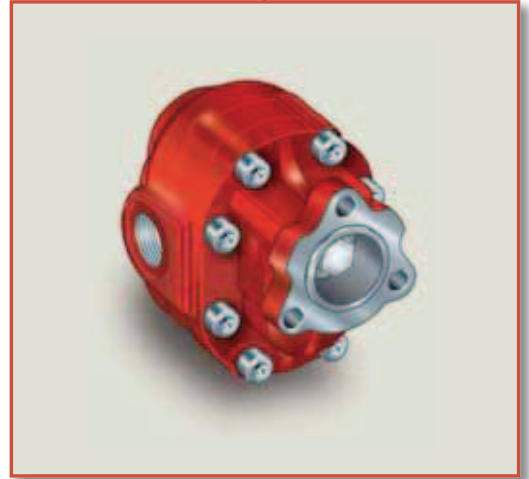




Hydrocar
Hydraulic Energy

FZ0

Gear Pump



ORDERING CODE
200 FZ0 015 ^D_S 0

21 UNI 222

ROTATION
D = CLOCKWISE
S = ANTICLOCKWISE

DISPLACEMENT

TYPE

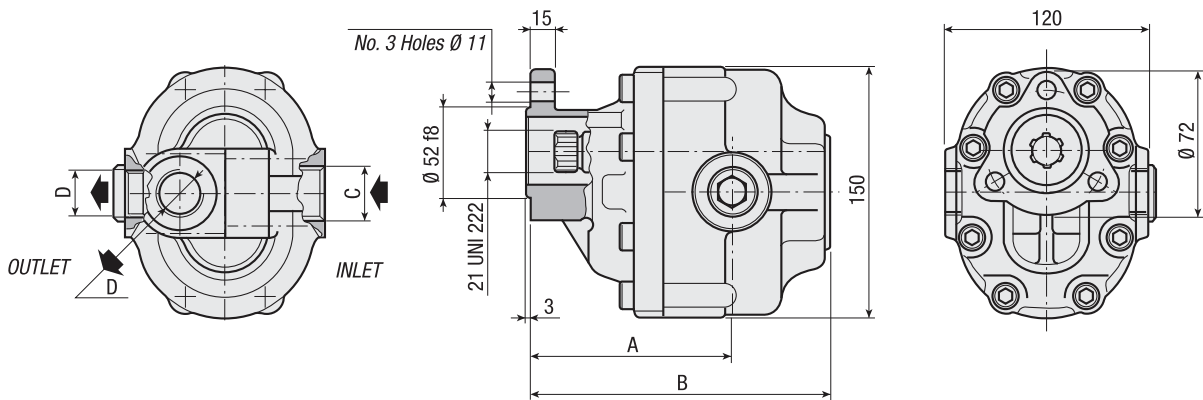
GEAR PUMP

UNI
21-222

FZ0 15
FZ0 22
FZ0 27
FZ0 36
FZ0 43
FZ0 57
FZ0 65
FZ0 90
FZ0 110

SPECIFICATIONS AND TECHNICAL DATA

TYPE	CODE	DISPLACEMENT cm ³ /rev.	A mm	B mm	C INLET	D OUTLET	WEIGHT kg
FZ0 15	200FZ0015 ^D _S 0	15	96.5	142.5	3/4" G	1/2" G	8.4
FZ0 22	200FZ0022 ^D _S 0	22	99.5	147.5	3/4" G	1/2" G	8.9
FZ0 27	200FZ0027 ^D _S 0	27	105	152.5	3/4" G	1/2" G	9
FZ0 36	200FZ0036 ^D _S 0	36	101.5	157.5	3/4" G	1/2" G	9.1
FZ0 43	200FZ0043 ^D _S 0	43	104.5	162.5	1" G	3/4" G	10.2
FZ0 57	200FZ0057 ^D _S 0	57	111.5	172.5	1" G	3/4" G	11.1
FZ0 65	200FZ0065 ^D _S 0	65	116.5	177.5	1" G	3/4" G	11.5
FZ0 90	200FZ0090 ^D _S 0	84	126	192.5	1" 1/4 G	1" G	12.6
FZ0 110	200FZ0110 ^D _S 0	105	138	204.5	1" 1/4 G	1" G	13.7



TRANSPORT
HYDRAULIC
SOLUTIONS

TM

FREEPHONE

New Zealand **0800 22 55 69**

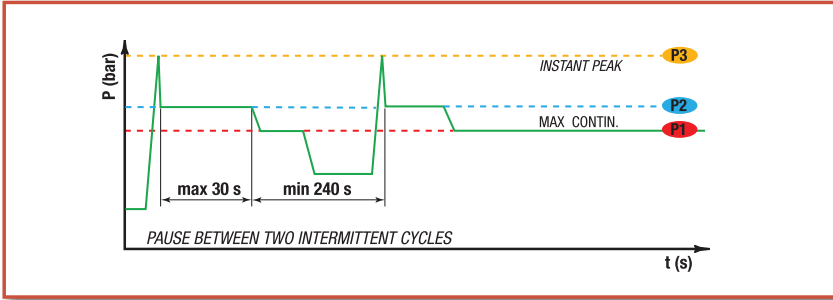
Australia **1800 22 55 69**

INNOVATION IN MOTION

www.transporthydraulics.com

TECHNICAL DATA

EXAMPLE OF WORKING CYCLES

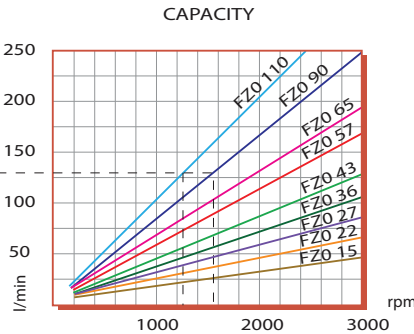
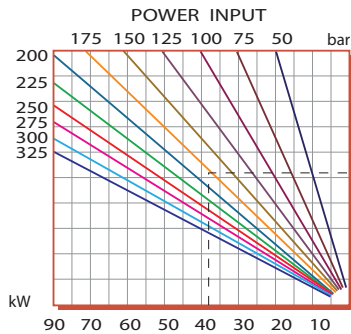


Inlet pressure:	0.7 ÷ 1.5 bar (absolute)
Operating viscosity range:	12 ÷ 100 cSt
Fluid temperature °C (t):	-10° + 80° C

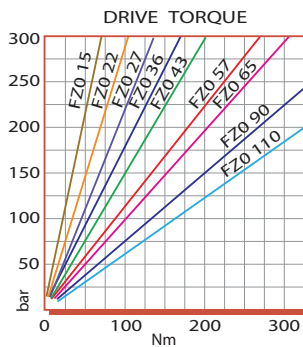
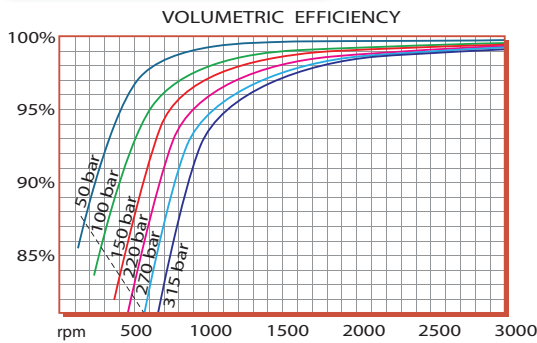
Working Press. P2	Contamination		Filter β _x = 75
	NAS 1638	ISO 4406	
≤ 200 bar	12	21/18	40μm
≥ 200 bar	11	20/17	25μm

◀ RECOMMENDED FILTERING (return or outlet)

TYPE		FZ015	FZ022	FZ027	FZ036	FZ043	FZ057	FZ065	FZ090	FZ0110
Displacement	Vg cm ³ /n cm ³ /rev.	15	22	27	36	43	57	65	84	105
Max continuous operating pressure	P1	315	305	300	300	280	240	220	210	180
Max intermitt. operat. press. (max 30 s)	P2	340	330	325	325	305	265	240	230	200
Max peak pressure (≤ 0.1 s)	P3	450	450	450	450	400	380	350	300	250
Max intermittent speed (P ≤ 20 bar)	n	4000	4000	3500	3500	3500	3500	3500	3500	3000
Max continuous speed (≤ P1)	n1	2500	2500	2200	2200	2200	2000	1800	1500	1500
Min intermittent speed (≤ P2 x 0.5) (max 30 s)	n4	450	450	350	350	350	300	300	300	300



DIAGRAMS



THE ABOVE SPECIFICATIONS REFER TO OIL TYPE ISO VG 46 AT 50° C (ν=30 cSt)

GEAR PUMPS



INNOVATION IN MOTION



FREEPHONE
 New Zealand **0800 22 55 69**
 Australia **1800 22 55 69**

www.transporthydraulics.com